



CFL2 Series Architectural  
LED Outdoor Lighting

Cat.#

Fixture Code:

Project:

Approvals:

PRODUCT IMAGE(S)



SPECIFICATIONS

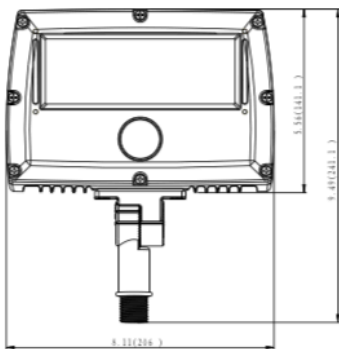
01. Corrosion resistant, rugged die-cast aluminum housing with powder coat paint finish.
02. High impact UV stabilized PC injection lens provide a variety of NEMA distribution.
03. Compact frame to fix lens with water proof rubber inside to ensure IP65 grade.
04. Stainless screws ensure anti-rust.
05. Design concept came from a "bird" stand on the tree with patent design and perfect detail.
06. Compact design housing isolates LED module from driver which ensure heat sink.
07. Installation of different brackets are "field replaceable", only remove 4 screws can change the installed bracket, good for stock flow systems, easy to manage.
08. Easy replacement for different kind of NEMA distributions, only remove 10 screws of frame cover, then replace the installed UV PC injection lens with new one.
09. IP67 driver and ROHS compliant, ambient operating temperature -40°C to 40°C.
10. ETL and Premium DLC listed.

APPLICATIONS

Compact LED flood with a variety of NEMA distribution for lighting applications such as building façades, signighting and wall washing in both commercial and industrial applications.

DIMENSIONS

(inch/mm)

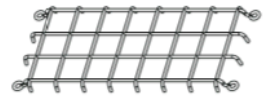
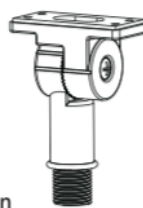


OPTIONAL

Knuckle

Top Visor Mount

Wire Guard

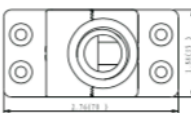


Bottom Visor Mount

Pipe Adaptor

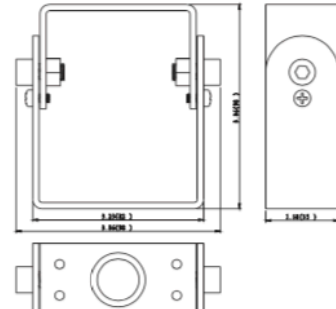
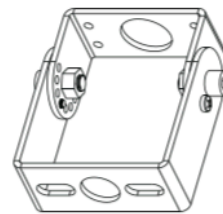
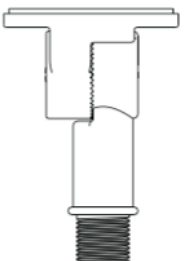


Knuckle Dimension



Yoke

Yoke Dimension



ORDERING INFORMATION - STOCK VERSION

Product Code	Mount	Watt	NEMA Tpye	BEAM Pattern	Voltage	CCT	Lumen @4000K	LPW	Weight	Packing Size	Finish
CFL2S (Small Size)	1/2" thread	20W	7H6V	Wide	120-277V	4000K	2621.7	135.60	2.5 Kg	Single carton(1pcs) 230*170*80cm Master carton(6pcs) 517*384*285cm	Bronze (RAL8019)
		30W	7H6V	Wide		5000K	3679.1	121.10	2.6 Kg		

ORDERING INFORMATION - MADE TO ORDER

CFL2S - [ ] - [ ] - [ ] - [ ] - [ ] - [ ] - [ ]

Product Series	Watt	CCT	Voltage	Mount	Distribution	Control Option	Finish
CFL2S	020 = 20W(550mA)	40K = 4000K	UL = 120-277V	KN = Knuckle	7 = 7H6V	B = Button Photocell	BZ = Bronze
CFL2 Family Small Size	030 = 30W(750mA)	50K = 5000K		YK = Yoke	5 = 5H5V	D = 1-10V Dimming	WH = White
				PA = Pipe Adaptor	3 = 3H3V	S = SPD 10KV	NA = Natural Aluminum
							BK = Black
							CC = Custom Color

NEMA Distribution

